

FOLLOWING DIMENSIONS FOR ALL MATERIALS,
NON-MACHINEABLE AND MACHINEABLE

*NOTE	MIN	MAX
A NONMAGNETIC	0.040"	0.625"
B MAGNETIC**	0.040"	0.250"

** THICKNESS OF A MAGNETIC TARGET DEPENDS
ON THE PERMEABILITY OF THE MATERIAL

G 7-1-1999
F 11-1-98
E 12-8-95
D N/A
C 3-11-94
B 8-11-93
A N/A

REDRAWN
R13 / US INC BLOCK
BLOCK CHANGE
ADDITIONAL MATERIAL
THICKNESS SPECS
REDRAWN
PRODUCTION RELEASE

REV DATE DESCRIPTION OF CHANGE

MATERIAL: SEE NOTES

FINISH: SEE NOTES

CNC FILE: N/A

ACAD FILE: L300-01

THE INFORMATION ON THIS DRAWING IS PROPRIETARY
AND MAY NOT BE USED, COMMUNICATED, OR REPRODUCED WITHOUT WRITTEN PERMISSION

US INCORPORATED

TITLE:

3" MAK TARGET

SIZE
A

TOLERANCES UNLESS NOTED
XX .001
XXX .0005
ANGLES 20.5°
MAX BREAK EDGE .001

DRAWING NUMBER

L300-01

REV
G

SCALE:

FULL

DWN BY:

NWM

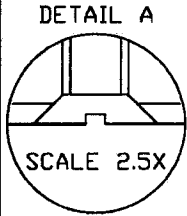
DATE: 7-1-1999

SHEET:

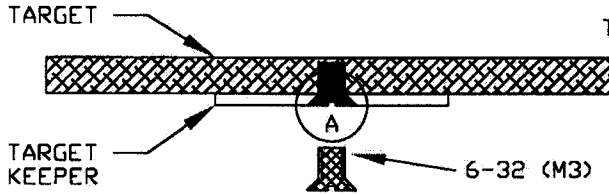
1 OF 1

3" MIGHTY MAK TARGET MOUNTING OPTIONS

TARGET ATTACHED TO TARGET KEEPER WITH SCREW



COUNTERSINK
TARGET AND
KEEPER SO
SCREW HEAD
FITS FLUSH
(STD TAP PROC)

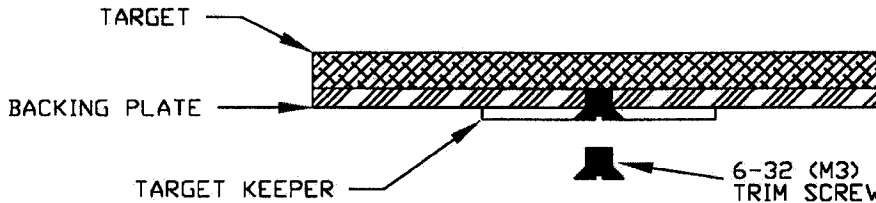


TAPPING INFORMATION FOR TARGETS
0.080" OR LESS TAP THRU
0.100" OR GREATER TAP 90%

6-32 (M3) VENTED FLAT HEAD SCREW

NOTE: SEE DWG# L300-02 TARGET KEEPER FOR SPECIFICATIONS

TARGET BONDED TO BACKING PLATE WITH ATTACHED KEEPER



6-32 (M3) VENTED FLAT HEAD SCREW
TRIM SCREW - FLUSH WITH BACKING PLATE

BOND TARGET TO BACKING PLATE CONCENTRIC TO ± 0.005
BOND MUST WITHSTAND 220° C MAXIMUM TEMPERATURE

NOTE: SEE DWG# L300-BP BACKING PLATE SPECIFICATIONS

H	11-16-99	REMOVED BOND INFO
G	1-22-99	ADDED DETAIL A
F	11-10-98	REDRAWN / TOLERANCE AND NOTE CHANGES
E	7-17-98	BACKING PLATE THICKNESS 0.062 - 0.100
D	11-1-96	COMBINE L300-06 & L300A42 / R13 / US INC BLOCK
C	3-16-94	CERAMIC NOTED
B	3-11-94	ADDITIONAL DIMENSIONS
A	8-11-93	PRODUCTION RELEASE

US INCORPORATED

TITLE: 3" MIGHTY MAK
TARGET MOUNTING OPTIONS

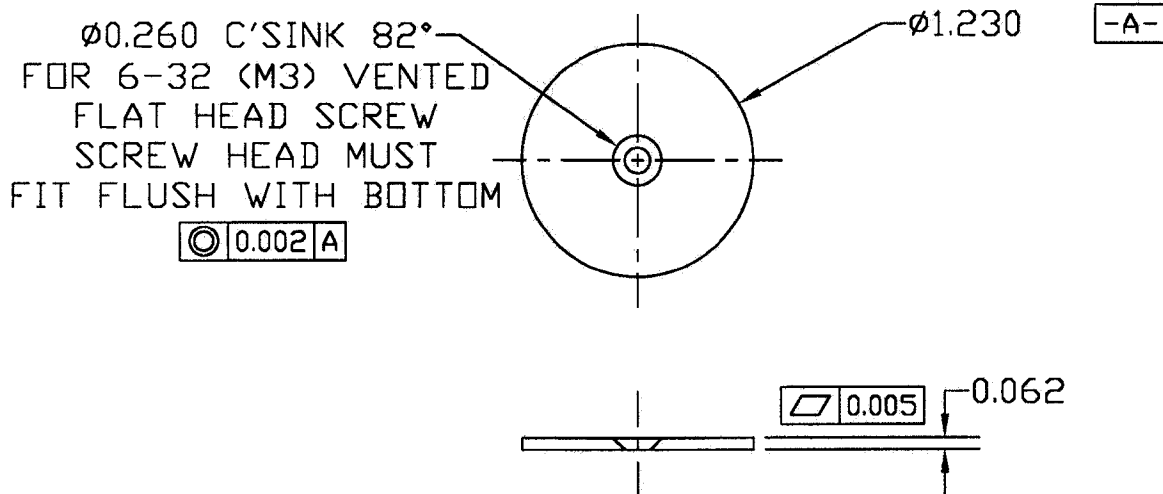
REV	DATE	DESCRIPTION OF CHANGE
MATERIAL: SPECIFY		
FINISH: ALL SURFACES 32/ -NO BURRS		
CNC FILE: N/A		
ACAD FILE: L300-01M		

SIZE	TOLERANCES UNLESS NOTED	DRAWING NUMBER	REV
A	.XX ±0.01 .XXX ±0.005 ANGLES 20.5° MAX BREAK EDGE 0.01	L300-01M	H
SCALE:	FULL	DWN BY: NWM	DATE: 1-22-99
		SHEET: 1 OF 1	

THE INFORMATION ON THIS DRAWING IS PROPRIETARY
AND MAY NOT BE USED, COMMUNICATED, OR REPRODUCED WITHOUT WRITTEN PERMISSION

3" MIGHTY MAK TARGET KEEPER OPTIONS

USE IF ATTACHING TARGET KEEPER
TO BACKING PLATE* OR DIRECTLY TO TARGET**



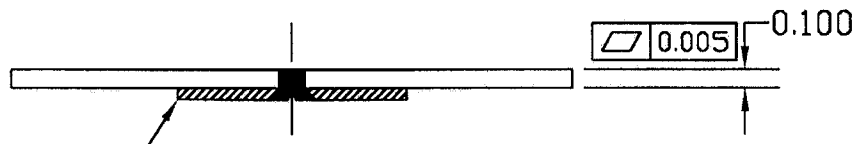
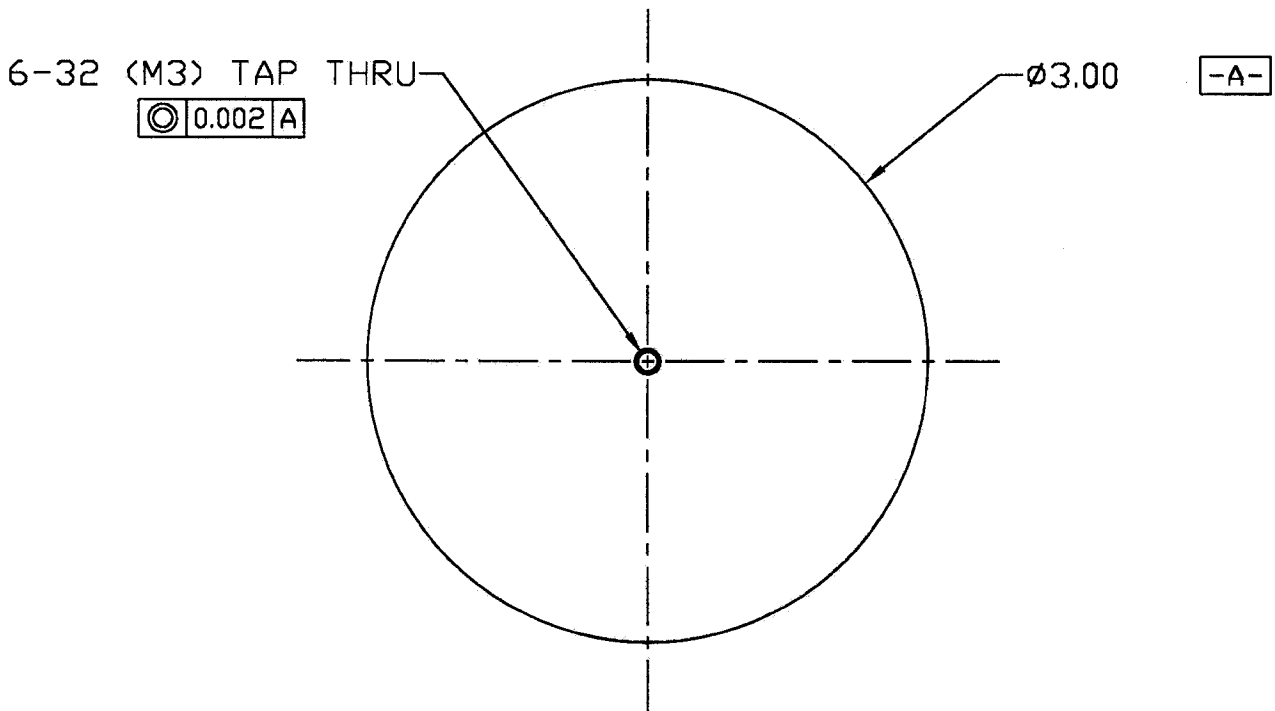
** NOTE: SEE DWG# L300-01M FOR TARGET MOUNTING OPTIONS

REV	DATE	DESCRIPTION OF CHANGE
C	11--16-99	EDIT TEXT
F	11-10-98	REDRAWN / TOLERANCE AND NOTE CHANGES
E	11-1-98	R13 / US INC BLOCK
D	4-10-96	FLATNESS SPEC 0.001-0.005 / C'SINK HOLE SPECS
C	12-8-95	BLOCK CHANGE
B	8-11-93	REDRAWN
A	N/A	PRODUCTION RELEASE

US INCORPORATED			
TITLE: 3" MIGHTY MAK TARGET KEEPER			
SIZE A	TOLERANCES UNLESS NOTED XX ADD1 XXX 0.005 ANGLES 0.03° MAX BREAK EDGE 0.01	DRAWING NUMBER L300-02	REV G
SCALE: FULL	DWN BY: NWM	DATE: 11-10-98	SHEET: 1 OF 1

MATERIAL: 1010-1018 CRS
 FINISH: ALL SURFACES 32/ -NO BURRS
 CNC FILE: N/A
 ACAD FILE: L300-02
 THE INFORMATION ON THIS DRAWING IS PROPRIETARY
 AND MAY NOT BE USED, COMMUNICATED, OR REPRODUCED WITHOUT WRITTEN PERMISSION

3" MIGHTY MAK BACKING PLATE WITH SCREW



L300-02 TARGET KEEPER
(SEE DWG# L300-02 FOR TARGET KEEPER SPECIFICATIONS)

ATTACH TARGET KEEPER TO BACKING PLATE CONCENTRIC TO ± 0.005
USE 6-32 (M3) VENTED FLAT HEAD SCREW
SCREW HEAD MUST BE FLUSH WITH TARGET KEEPER SURFACE

NOTE: CONCENTRICITY IS IMPORTANT IN MAINTAINING MAGNETIC PATH
TO TARGET AND CENTERING TARGET ON CATHODE

D	11-10-98	REDRAWN / TOLERANCE AND NOTE CHANGES
C	5-4-98	CHANGED THICKNESS
B	8-11-93	REDRAWN
A	N/A	PRODUCTION RELEASE

REV	DATE	DESCRIPTION OF CHANGE
MATERIAL: OFHC COPPER		
FINISH: ALL SURFACES 32/ -NO BURRS		
CNC FILE: N/A		
ACAD FILE: L300-BP		

THE INFORMATION ON THIS DRAWING IS PROPRIETARY
AND MAY NOT BE USED, COMMUNICATED, OR REPRODUCED WITHOUT WRITTEN PERMISSION

US INCORPORATED			
3" MIGHTY MAK BACKING PLATE WITH SCREW			
SIZE	TOLERANCES UNLESS NOTED	DRAWING NUMBER	REV
A	.XX ±0.01 XXX ±0.005 ANGLES 30.5° MAX BREAK EDGE 0.01	L300-BP	D
SCALE: FULL	DNV BY: NWM	DATE: 11-10-98	SHEET: 1 OF 1